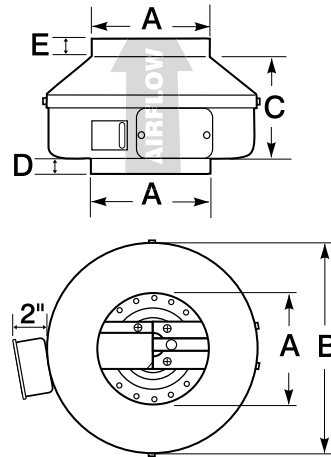




## DIMENSIONAL DATA

Part#	Model#	A	B	C	D	E
99 029	A-4	4"	8"	5 1/2"	7/8"	7/8"
99 040	A-4HP	4"	9 1/2"	5 1/2"	7/8"	3/4"
99 010	A-5	5"	8"	5 1/4"	7/8"	7/8"
99 042	A-5HP	5"	9 1/2"	5"	7/8"	1"
99 011	A-6	6"	11 1/2"	6"	3/4"	7/8"
99 041	A-6HP	6"	13 1/4"	6 1/2"	1"	3/4"
99 012	A-8	8"	13 1/4"	6 1/4"	1"	7/8"
99 013	A-8HP	8"	13 1/4"	6 1/4"	1"	7/8"
99 014	A-10	10"	13 1/4"	6 1/4"	1"	1 1/4"
99 039	A-10HP	10"	13 1/4"	6 1/4"	1"	1 1/4"
99 015	A-12	12"	16"	8 1/4"	1"	1 1/4"
99 038	A-12HP	12"	16"	8 1/4"	1"	1 1/4"



UL LISTED  
DUCT FANS  
(E77545)

## AIR PERFORMANCE DATA

Part No.	MODEL	Duct Diam. (in.)	MAX. RPM	MAX. AMPS	MAX WATTS	CFM vs. Static Pressure										MAX PS. (IN.)
						0"	.125"	.25"	.375"	.5"	.75"	1.0"	1.25"	1.5"		
99 029	A-4	4	2950	0.17	19	117	101	86	72	58	—	—	—	—	0.81	
99 040	A-4HP	4	2800	0.73	83	148	139	130	120	111	90	68	42	—	1.65	
99 010	A-5	5	2950	0.17	19	132	115	98	81	65	—	—	—	—	0.89	
99 042	A-5HP	5	2650	0.76	87	191	175	161	146	131	102	75	45	—	1.61	
99 011	A-6	6	2700	0.74	84	257	241	221	197	178	143	99	59	—	1.60	
99 041	A-6HP	6	2950	1.26	147	392	368	346	326	305	263	228	191	150	2.27	
99 012	A-8	8	2600	1.02	116	481	444	403	361	319	237	177	130	76	2.04	
99 013	A-8HP	8	2950	1.31	152	521	496	469	440	411	345	282	231	180	2.29	
99 014	A-10	10	3000	1.27	147	521	499	475	448	418	357	293	234	176	2.28	
99 039	A-10HP	10	3000	2.11	242	590	565	541	519	496	442	394	339	290	2.79	
99 015	A-12	12	2450	1.70	196	711	675	627	576	521	382	284	220	166	2.65	
99 038	A-12HP	12	3250	3.21	373	801	783	765	747	729	692	655	611	566	3.69	

Ratings shown are based on tests made in accordance with AMCA Standard 210 and AMCA Standard 300 and comply with the requirements of the AMCA Certified Ratings Program. All fans use energy efficient permanent split capacitor motors with the exception of the A-4 and A-5 fans which have shaded pole motors.

## SOUND DATA

Part No.	MODEL	(in.)	Sones at Given Static Pressure											
			0"	.125"	.25"	.375"	.5"	.75"	1.0"	1.25"	1.5"			
99 029	A-4	4	4.5	4.2	4.0	3.8	3.8	—	—	—	—	—	—	—
99 040	A-4HP	4	6.5	6.7	6.9	7.3	7.7	8.1	8.3	8.4	—	—	—	—
99 010	A-5	5	4.8	4.3	4.1	4.0	3.9	—	—	—	—	—	—	—
99 042	A-5HP	5	6.8	6.9	7.0	7.3	7.7	8.5	8.6	8.7	—	—	—	—
99 011	A-6	6	6.7	6.5	6.5	6.4	6.3	6.2	6.6	7.1	—	—	—	—
99 041	A-6HP	6	10.8	10.8	10.8	10.8	10.7	10.2	10.0	9.7	9.8	—	—	—
99 012	A-8	8	9.1	8.4	7.7	7.3	7.1	7.3	7.6	8.0	8.6	—	—	—
99 013	A-8HP	8	11.4	10.9	10.5	10.0	9.7	9.3	9.8	10.2	10.6	—	—	—
99 014	A-10	10	12.3	11.8	11.3	10.9	10.6	9.8	9.4	9.2	9.3	—	—	—
99 039	A-10HP	10	12.7	12.4	12.1	11.9	11.6	11.1	10.7	10.4	10.3	—	—	—
99 015	A-12	12	11.5	10.4	9.5	8.8	7.3	6.1	7.2	8.0	8.8	—	—	—
99 038	A-12HP	12	—	—	—	—	21.0	21.0	20.0	19.2	18.3	—	—	—

The sound ratings shown are loudness values in fan sones at 5 ft. (1.5m) from the test inlet duct in a hemispherical free field calculated per AMCA Standard 301. Values shown are for installations Type D: ducted inlet, ducted outlet. Ratings do not include the effect of duct and correction.

**AMERICAN ALDES**

VENTILATION CORPORATION

4537 NORTHGATE COURT  
SARASOTA, FL 34234-2124, USA

Tel: 941 • 351- 3441  
Fax: 941 • 351- 3442

www.americanaldes.com  
info@aldes-us.com

**IAQ VENTILATION HOTLINE**  
800-255-7749



419AFAN-06-05